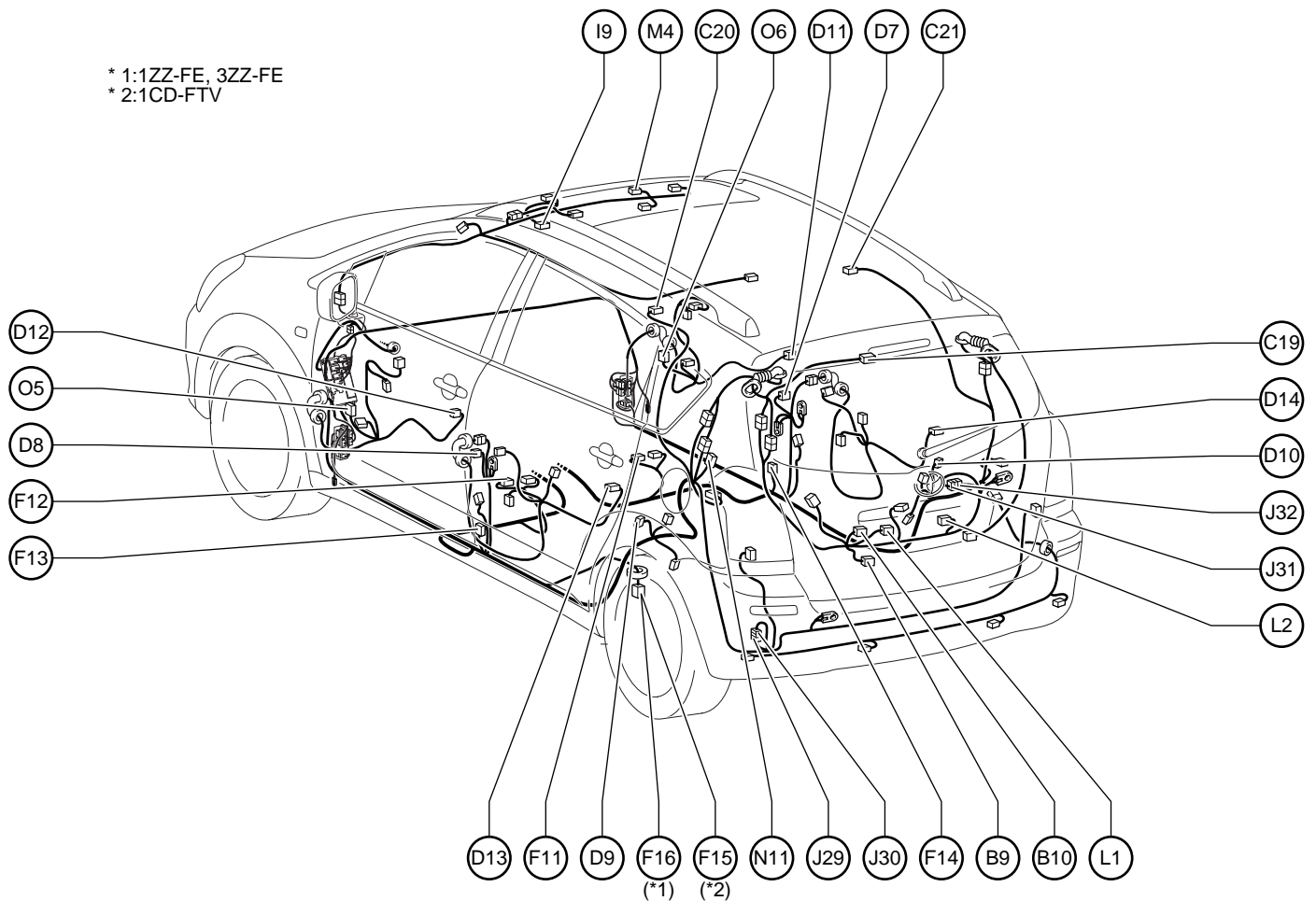


## G ELECTRICAL WIRING ROUTING

### Position of Parts in Body

[RHD]



\* 1:1ZZ-FE, 3ZZ-FE  
\* 2:1CD-FTV

B 9 Back Door Lock Assembly  
B10 Back Door Opener SW

C19 Center Stop Lamp  
C20 Curtain Shield Airbag Squib (LH)  
C21 Curtain Shield Airbag Squib (RH)

D 7 Door Courtesy SW (Driver's Side)  
D 8 Door Courtesy SW (Front Passenger's Side)  
D 9 Door Courtesy SW (Rear LH)  
D10 Door Courtesy SW (Rear RH)  
D11 Door Lock Assembly (Driver's Side)  
D12 Door Lock Assembly (Front Passenger's Side)  
D13 Door Lock Assembly (Rear LH)  
D14 Door Lock Assembly (Rear RH)

F 11 Front Seat Inner Belt (Driver's Side)  
F 12 Front Seat Inner Belt (Front Passenger's Side)  
F 13 Front Seat Outer Belt (LH)  
F 14 Front Seat Outer Belt (RH)  
F 15 Fuel Sender Gage  
F 16 Fuel Suction Pump and Gage Assembly

I 9 Inner Rear View Mirror

J 29 Junction Connector  
J 30 Junction Connector  
J 31 Junction Connector  
J 32 Junction Connector

L 1 License Plate Lamp (LH)  
L 2 License Plate Lamp (RH)

M 4 Map Lamp

N 11 Noise Filter (Rear Window Defogger No.2)

O 5 Outer Rear View Mirror (LH)  
O 6 Outer Rear View Mirror (RH)